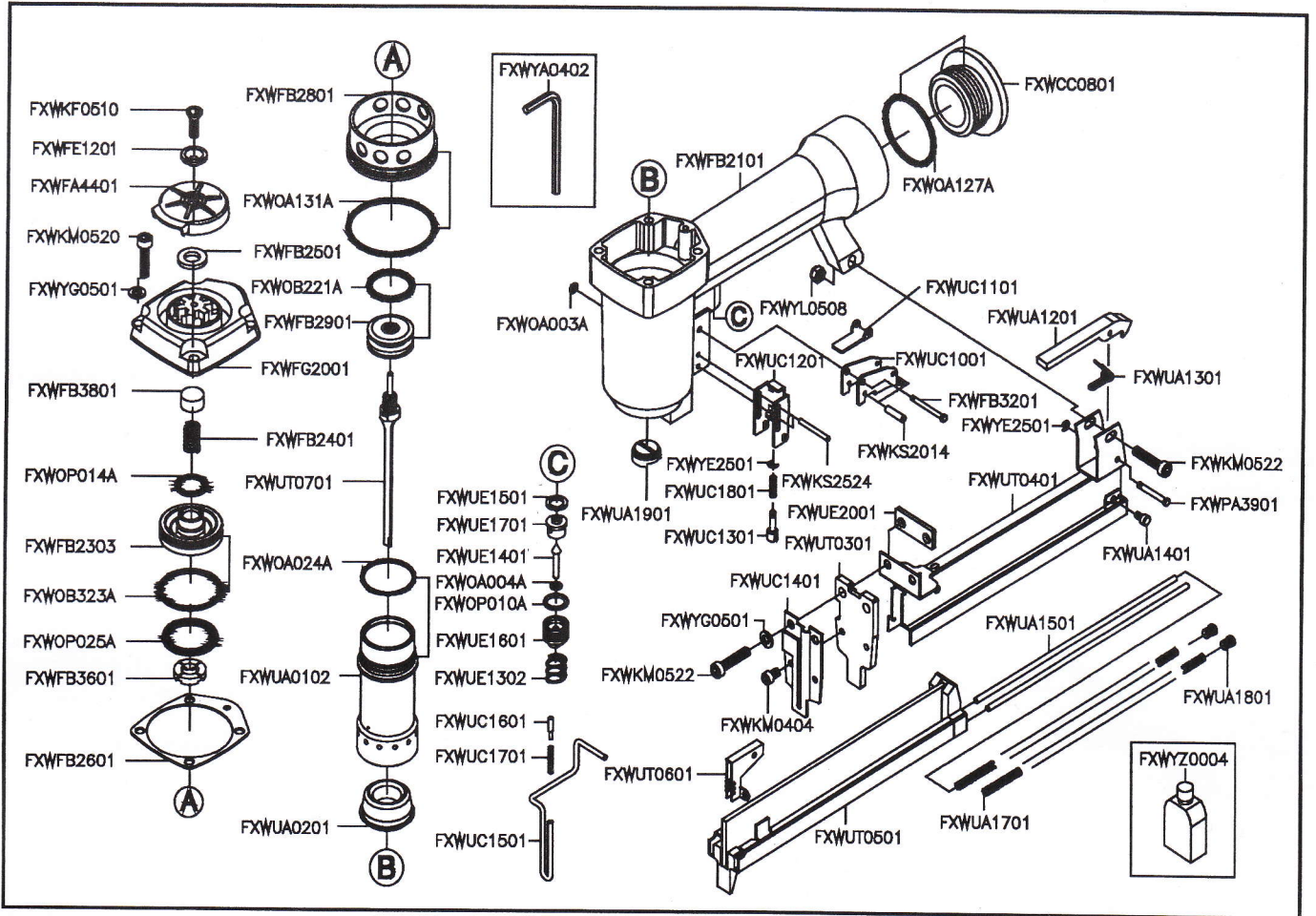


FALN4025-1 (UT/S2-07)



| Part_No | Description | Spec | Q'ty | Part_No | Description | Spec | Q'ty | Part_No | Description | Spec | Q'ty |
|-----------|--------------------|------------|------|-----------|-------------------|------------|------|-----------|---------------------|--------|------|
| FXWCC0801 | END CAP | | 1 | FXWOA024A | O-RING | ARP568-024 | 1 | FXWUC1401 | SAFETY GUIDE | | 1 |
| FXWFA4401 | EXHAUST CAP | | 1 | FXWOA127A | O-RING | ARP568-127 | 1 | FXWUC1501 | UPPER SAFETY | | 1 |
| FXWFB2101 | BODY | | 1 | FXWOA131A | O-RING | ARP568-131 | 1 | FXWUC1601 | SPRING SHAFT | | 1 |
| FXWFB2303 | HEAD VALVE PISTON | | 1 | FXWOB221A | O-RING | 22×3 | 1 | FXWUC1701 | SAFETY SPRING | | 1 |
| FXWFB2401 | COMPRESSION SPRING | | 1 | FXWOB323A | O-RING | 31.8×2.4 | 1 | FXWUC1801 | SPRING | | 1 |
| FXWFB2501 | PISTON STOP | | 1 | FXWOP100A | O-RING | P10 | 1 | FXWUE1302 | COMPRESSION SPRING | | 1 |
| FXWFB2601 | CAP SEAL | | 1 | FXWOP101A | O-RING | P10 | 1 | FXWUE1401 | TRIGGER VALVE STEM | | 1 |
| FXWFB2801 | CYLINDER RING | | 1 | FXWOP025A | O-RING | P25 | 1 | FXWUE1501 | SEAL | | 1 |
| FXWFB2901 | MAIN PISTON | | 1 | FXWPA3901 | LATCH SPRING | | 1 | FXWUE1601 | TRIGGER VALVE GUIDE | | 1 |
| FXWFB3201 | TRIGGER PIN | | 1 | FXWUA0102 | CYLINDER | | 1 | FXWUE1701 | TRIGGER VALVE SEAT | | 1 |
| FXWFB3601 | PISTON STOP | | 1 | FXWUA0201 | BUMPER | | 1 | FXWUE2001 | SPACER | | 1 |
| FXWFB3801 | PISTON STOP | | 1 | FXWUA1201 | LATCH | | 1 | FXWUT0301 | COVER PLATE | | 1 |
| FXWFE1201 | EXHAUST CAP RING | | 1 | FXWUA1301 | LATCH SPRING | | 1 | FXWUT0401 | MAGAZINE CAP | | 1 |
| FXWFG2001 | CYLINDER CAP | | 1 | FXWUA1401 | RETAINER SCREW | | 2 | FXWUT0501 | MAGAZINE ASSY | | 1 |
| FXWKF0510 | FLAT HD.BOLT | M5×0.8-10L | 1 | FXWUA1501 | GUIDE STEM | | 2 | FXWUT0601 | PUSHER | | 1 |
| FXWKM0404 | HEX.SOC.HD.BOLT | M4×0.7-4L | 2 | FXWUA1701 | PUSHER SPRING | | 2 | FXWUT0701 | DRIVER ASSY. | | 1 |
| FXWKM0520 | HEX.SOC.HD.BOLT | M5×0.8-20L | 4 | FXWUA1801 | HEX.SOC.SET SCREW | | 2 | FXWYA0402 | HEX. BAR WRENCH | D4 | 1 |
| FXWKM0522 | HEX.SOC.HD.BOLT | M5×0.8-22L | 3 | FXWUA1901 | NOZZLE | | 1 | FXWYE2501 | E-RING | § 2.5 | 2 |
| FXWKS2014 | SPRING PIN | § 2.0×14L | 1 | FXWUC1001 | TRIGGER | | 1 | FXWYG0501 | SPRING WASHER | § 5 | 6 |
| FXWKS2524 | SPRING PIN | § 2.5×24L | 2 | FXWUC1101 | CONTACT LEVER | | 1 | FXWYL0508 | LOCK NUT | M5×0.8 | 1 |
| FXWOA003A | O-RING | ARP568-003 | 1 | FXWUC1201 | SAFETY SET | | 1 | FXWYZ0004 | OIL BOX | | 1 |
| FXWOA004A | O-RING | ARP568-004 | 1 | FXWUC1301 | SHAFT | | 1 | | | | |

☆☆ If you need to order parts, please mark both Parts No. and Description. ☆☆